



Techaid Functions

- Network Number
- Pin Code a System
- Switch Infomation
- Program a Switch Button
- Send a InfraNet IR Command .
- Switch Region and System Code
- Loopback Test
- EXIT

TARA Switch Programming User Guide

TARA Electronic Automation © 2006



CONTENTS

Package Contents	2
Introducing Tara System Techaid software	3
System Techaid Component Layout	4
Item Functions	5
Service	5
Web	5
Contact Us	5
Help	5
About	5
Network Number	6
Pin Code a System	6
Switch Information	8
Program a Switch Button	8
Switch Region & System Code	10
Send a Infranet IR Command	10
Loopback Test	11
Exit	12
Tara Switches & 3rd party remotes	12
Trouble Shooting Guide	13

Package Contents

- TARA USB Inframouse
- USB cable
- CD-ROM containing drivers & online manual
- This System Techaid User Guide

PC Requirements



- PC running Win98, Win2000, WinNT, WinXP
- 1 x free USB port
- CD-ROM Drive

Other Requirements



- Tara switch or switches or Teachable Remote Control or Tara installed network
- Do not store the inframouse in high humidity or high temperatures
- Do not drop the inframouse
- Do not open or repair the inframouse yourself

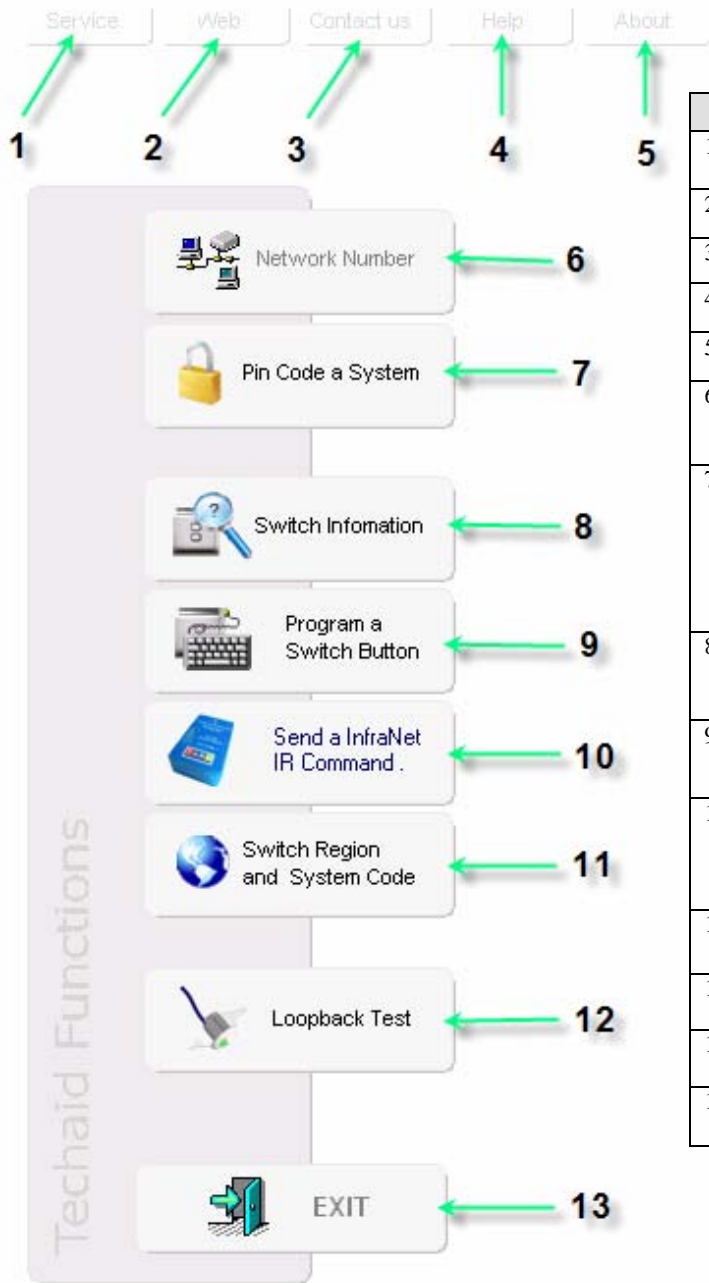
Introducing Tara System Techaid Software

Whether you are an electrical contractor installing Tara systems, an end user using a Tara system in your home or place of work you will find this manual useful in helping you program a Tara switch to control your Tara devices on a Tara network which may in turn control your entire homes/work place electronic device switching including lighting and home theatre devices.

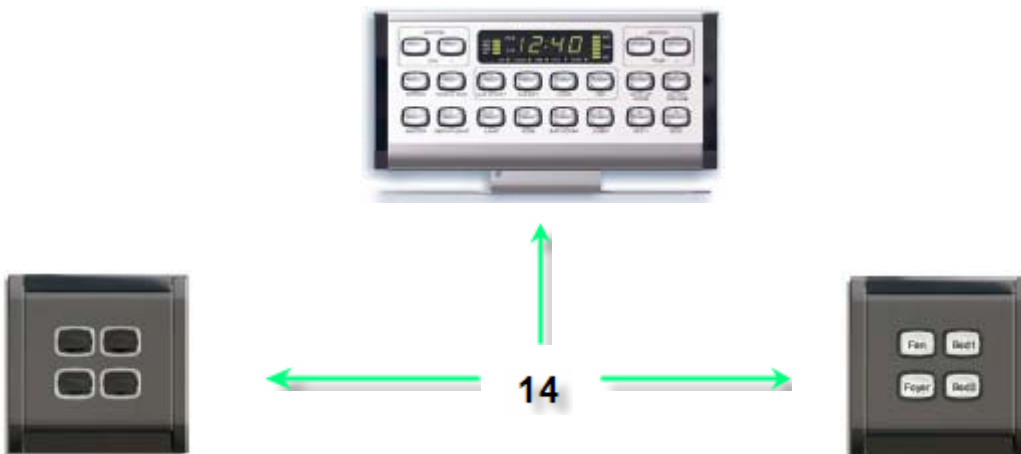
This software works by way of a Tara inframouse with built in IR transmitters for sending IR command to other devices including Tara switches, and also has built in IR receivers to allow for reading current settings of switches.

The Inframouse can also be used to program 3rd party teachable remote controls.

System Techaid Component Layout



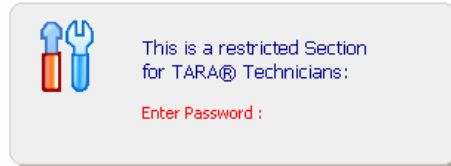
Item		Description
1	Service	Used by Technicians for troubleshooting
2	Web	Visit www.taraautomation.com.au
3	Contact Us	Visit www.taraautomation.com.au contacts page
4	Help	Online documentation.
5	About	About this software.
6	Network Number	Used for large installations where networks can be split into smaller networks by using network numbers
7	Pin Code a System	The TARA Pin Code is a security feature stopping someone with a TARA switch operating your system. The System Code is set for the entire TARA system and all additional switches, you can select your own TARA System Code (default code is 0)
8	Switch Information	Will show you the current switch button information, ie unit and channel number
9	Program a Switch Button	Enter into switch program mode
10	Send a Infranet IR Command	Will send an actual IR command, ie. Command to switch a Tara unit and channel, also can be used to program teachable remote controls
11	Switch Region and System Code	Display current region and Pin Code
12	Loopback Test	Test your connected network units.
13	EXIT	Exit the program.
14	Switches	Just some of the TARA switches that can be programmed by the System Techaid



Item Functions

1) Service

Service is reserved for technicians and TARA professionals and is used for troubleshooting. To enter service mode you must type the required password and click on the password.



2) Web

Clicking on Web will automatically open your browser and open the TARA web page (<http://www.taraautomation.com.au>).

3) Contact Us

Clicking on Contact Us will automatically open your browser and open the TARA web contact page. (<http://www.taraautomation.com.au/contacts>).

4) Help

Get Help on using this software via the online user manual.

5) About

Shows the software version number and the region it supports.



6) Network Number

If you have a larger Building with independent Units and the need to control them via a centralized service department, then you have to set-up a TARA Interlink System.

Therefore, TARA provides a Network Number so as to be able to communicate with each network and its TARA Network Devices.

You can install up to 250 TARA Networks in a TARA System and each TARA Network can have up to 250 TARA devices connected.

By using a 10 channel TARA Relay Unit and 250 devices in your Network you end up with 2500 circuits in a single network. With 250 networks allowed in a TARA installation this allows for a total of 625,000 circuits.

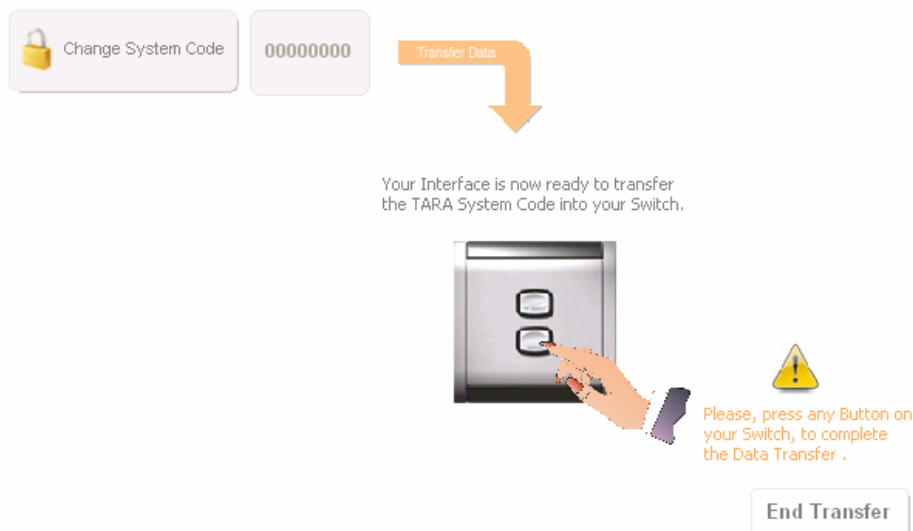
7) Pin Code a System

Each Tara network installation has a Tara System Code (default code is 00000000), it is in theory your own personal pin number for your Tara installation and switches to stop unauthorized access to your Tara network, (ie. intruders can not operate your Tara network with their own Tara switches.

Each Tara switch needs to be initialized with your nominated Pin Code prior to programming the switches. (Switches default Pin Code is also 00000000, if your system is as per factory defaults you do not need to reinitialize your switches).

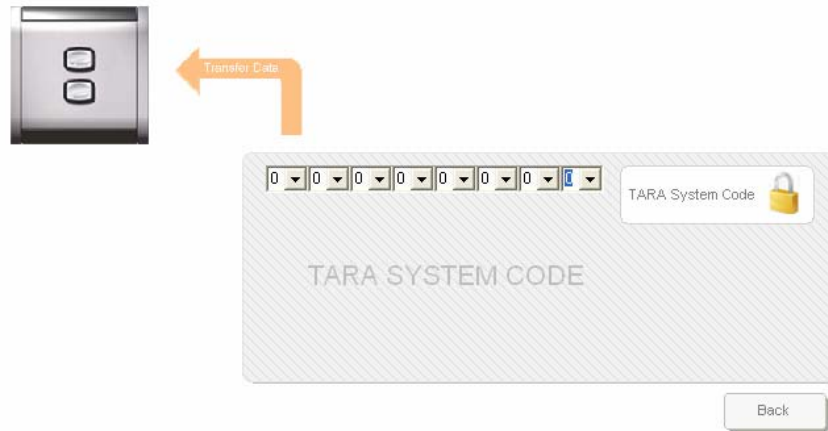
To select Pin Code

- (1) Click on Pin Code a System, to transfer the pin code shown just press a button on each switch that you need to pin code.



- (2) To change a system code, click on Change System Code.

- (3) Select the System Code by clicking on the down arrow and then select the number required by clicking on the desired number.



- (4) When done click on Back and you are ready to transfer the pin code to your switch by pressing any button on your switch. As described above the nominated system code will be transferred to the desired switch or switches, (all switches are pre programmed with a system code of 00000000, if your installation is other then the default then you will need to transfer your system code into every switch. To transfer the Pin code to your switch press any button on your Tara switch (make sure your switch is somewhere in line of sight near your Tara Inframous as the communication between the 2 is via infra-red) and you should get a message “Your transfer has been completed”, this will stay on the screen for a few seconds and you are now ready to transfer the code into your next switch.

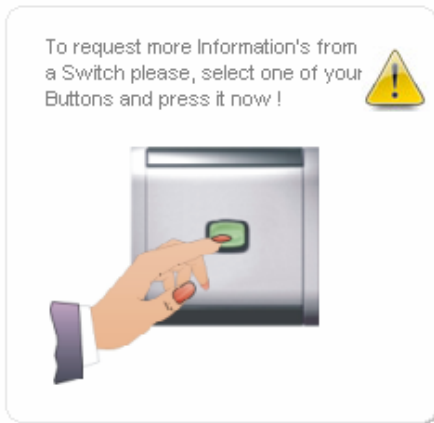


Click on End Transfer to go back to Techaid Main Menu. PS: The code is only transferred into a switch and not individual buttons, so there is no need to press more than 1 button on a switch (any button will do).

8) Switch Information

This function allows you to interrogate the current settings of your Tara switch.

- i. Click on “Switch Information”.
- ii. Press your Tara switch button you wish to interrogate, and you will see the network number it belongs to as well as device type (dimmer etc) and unit number and channel number it controls,(for dimmer preset you will see the time ramp and % brightness levels the button has been programmed to).
- iii. Press other Tara switch buttons you wish to interrogate or click on End Testing and you will be returned to the Techaid Main Menu.



Read Switch Information

Network Number : 0	Additional Information :
Device : On/Off Button	
Unit : 6	
Channel : 3	
End Testting	

9) Program a Switch Button

For a Tara switch to be able to control a Tara device it must be programmed to activate the desired device (ie. To turn on/off lights in particular rooms etc). Each installation has a “Tara Control Device Information Schedule” which is supplied by Tara and completed by your installer during system installation. This schedule shows all units supplied, unit numbers and location and type of device they control. This information makes switch programming very simple and can be done at any time, prior to, during and on completion of the installation and can be done anywhere as long as you have a Tara System Techaid.

Programming Tara Switches

(Refer to your Tara Control device information Schedule for Device Unit # and Channel information)

- i. Click on “Program a Switch Button” to bring up the following screen.
- ii. Select your Network number if not “000” and type the required network number.
- iii. Select Device, choices are: On/Off Button, Dimmer Button, Dimmer Preset, Fan Button, Aircon Button, Impulse Button and Scene Button.

Program a Switch Button

The screenshot shows a software interface for programming a switch button. It features two main panels. The left panel has a 'Network Number' field set to '000', a 'Device' dropdown menu set to 'Dimmer - Preset', a 'Unit #' field with three dropdown menus set to '0', '0', and '3', and a 'Channel' dropdown menu set to '02'. The right panel has an 'Additional Information' section with an information icon, a 'Time Ramp' dropdown menu set to '240sec', and a 'Dimmer Level' field set to '90%'. At the bottom of the interface are two buttons: 'Start Transfer' and 'End'.

- iv. Select Unit # and select channel by clicking on the drop down menu arrow and select the required numbers with a mouse click.
- v. Dimmer Button and dimmer preset device has extra programming parameters with the additional fields (ie. Time Ramp & Dimmer Level). -**Time Ramp** setting allows for the lights to gradually illuminate over the nominated period (in seconds from 0 to 240) until it reaches the preset dimmer brightness level. - **Dimmer Level** refers to the brightness level of the dimmed lights in% terms (%10 being low and %100 being full brightness, can be set to any level). You may override this dimmer level just by holding down the switch button until the desired brightness level is reached.
Time Ramp: Select and click on desired number of seconds (0 will work in normal mode)
Dimmer Level – Click in the % field and type the required level of brightness (leave as 000, this signifies normal operation ie. full brightness same as %100)
Dimmer Button will turn the dimmer on and off and by holding button down it will dim to the desired level.
Dimmer Preset will only turn the dimming light on to the programmed level and can only be turned off by using a dimmer button. A dimmer preset is generally used in eg. 4 button switch, 1st button is dimmer on/off button, 2nd button is dimmer preset to say %30, and the 3rd button is a dimmer preset say %60 and the 4th button could be dimmer preset %100.
- vi. Click on Start Transfer on the Tara Techaid Software.
- vii. Press Tara Switch button that you are programming, Now you should see a message appear on the screen for a few seconds “The information has been successfully transferred”, you have now programmed your button and can continue with this screen to program all your other switch buttons, remember to select the correct device.
- viii. Click on Back to go to Techaid Main Menu.

10) Switch Region & System Code

Select switch region & system code and press any button on a switch to find out the current system code as well as the region this switch may e used.

To request more Information's from a Switch please, select one of your Buttons and press it now!

Australia - New Zealand

Your TARA System Code is : 0

End Testing

11) Send a Infranet IR Command

This program can be used to send an IR command to your Tara installation and actually switch your devices on and off (it works exactly like a Tara programmed switch) and you can also use this to send an IR command to any teachable IR Remote Control.

Send a Infranet Command

Network Number : 000

Device : On/Off - Button

Unit # : 0 0 1

Channel : 01

Additional Information :

Start Transfer End

Send Infranet IR Command

- i. Click on “Send a Infranet IR Command” and the screen as shown above appears.
- ii. Select your network if not correct and type the correct network number.
- iii. Select the device you want to control by using the down arrow drop down menu and click on appropriate device.

- iv. Select Unit# to select your unit number, click on Channel down arrow drop down menu and select the channel number.
- v. Click on Start Transfere and this will send the IR command via the USB Inframouse. If there is a Tara Infranet receiver in the vicinity then the command will be processed through the Tara network and will switch the nominated device. When programming Teachable Remote Controls you will also use the same procedure to Send Frame however your remote control will need to be in learn mode waiting for an IR command, when done the remote control will be programmed to switch the desired Tara device. (refer to your remote control documentation)

12) Loopback Test

This tests communication with the units installed on your network, communication is checked with each unit individually. If communication with a unit fails it means any device connected to the particular unit will not be able to be controlled with you Tara network and switchjes. (See the Tara Troubleshooting guide).

With this 'Loop Test' you can find out, if an Unit is connected to your TARA@ Network.

Make sure you have Eye contact with one of your IR Receiver Unit's in your Room.

Simply tip a Unit Number into the Edit Section and Press the 'Start Test' Button.



Unit Number :

Loopback Test

- i. Check that your inframouse has a line of sight with your Tara IR receiver so as to be able to send the IR signal via the network.
- ii. Click in the Unit# field and type in the desired unit number you wish to check.
- iii. Click on Start Testing. Keep an eye on your IR Receiver in the ceiling or wall for flashing LED either red or green. **1 flash** means that there was no communication with the unit (see troubleshooting guide) **3 flashes** means that communication with the unit has been established and seems to be functioning.


- 13) **Exit**
Exit this program.

14) **Tara Switches & 3rd party remotes**

Tara has a range of switches for domestic commercial and industrial applications and they are all interchangeable and programmable for use in all applications. A TARA network can also be controlled with any teachable 3rd part remote control via IR.



TroubleShooting Guide

<u>Problem Type</u>	<u>Possible Cause and Possible Solutions</u>
<p>TARA System Techaid software will not start and you see the following error message.</p> 	<p>Check that the USB cable is connected to your PC & the USB TARA Inframouse.</p> <p>Try another USB port on your PC.</p> <p>Uninstall and reinstall your USB Inframouse device driver.</p> <p>Try on another PC.</p> <p>Contact TARA technical support.</p>
<p>Cant program a TARA switch</p>	<p>Check the switch batteries are installed properly.</p> <p>Try another switch.</p> <p>Some functions work but still cant program switch, then check that there are batteries or that the batteries in your USB inframouse are functioning, (although the inframouse is powered via the USB port it may not have enough power to execute some functions).</p>
<p>Switches will not switch any TARA devices</p>	<p>Check that the switch is programmed for the correct device, unit number & channel, network number and pin code.</p> <p>Get Switch information via TARA Inframouse.</p> <p>Send IR Infranet Command for same device and see if network responds.</p> <p>Test device number using Loopback Test</p>
<p>Switch works intermittently</p>	<p>Check the batteries in the switch.</p> <p>Check that the switch has been programmed for the correct device type.</p>