



Key Features

- Ergonomic design permits effortless, one-handed operation.
- Completely customisable, programmable and upgradeable.
- Full colour TFT LCD to display custom buttons, text, graphics, and animations.
- Integrated high resolution touch screen.
- Extremely bright, backlit display and keypad.
- Easy-to-use Windows based software for programming and customisation.
- Non-volatile Flash memory stores your programme even when power is lost.
- Extremely wide IR transmitting frequency range.
- 89 mm diagonal LCD screen.
- Field upgradeable firmware.
- USB Programming.

T3 Universal Controller

The T3 is RTI's ultimate handheld universal controller. With a full colour TFT LCD display, powerful 32-bit MCU, 32MB of memory, and Wi-Fi* communication option, the T3 takes remote control to a new level.

The amazing T3 Universal System Controller combines the power and flexibility of a graphic LCD touchscreen with an ergonomic design that permits effortless one-handed operation. On its own, the T3 is the most user-friendly universal remote control you have ever used. Combined with the other TheaterTouch™ products, the T3 becomes a robust commercial-quality control system.

Description

The T3 maintains the perfect balance between a large touchscreen and frequently used hard buttons. It is thinner, lighter, and has better ergonomics for one-handed operation than any product in its class. This design overcomes the need for compromise between form and function. Sleek and perfectly balanced, the T3 is also infinitely flexible and expandable.

The T3 takes complete control of the home theater, replacing all other remotes. It features a bright, high-contrast TFT LCD that can display custom buttons, text, graphics, and animations. In addition to the backlit display, there are 16 hard buttons that allow easy access to frequently used functions. Programming is easy and convenient thanks to the Windows® based TheaterTouch Designer™ software.

The T3 is more than just a universal remote control - it's an expandable control system. When used with the available RTI accessory devices, the T3 is capable of RF transmission through walls and cabinets, power sensing for reliable operation, and RS-232 communications for advanced control.



Specifications

Power	3.6 VDC, 1050 mA Lithium-Ion Battery Pack
Power Management	Automatic On/Off (tilt switch)
Infrared Control Range	9 metres @ 60 degrees
Infrared Frequency Transmission Range	15kHz - 460kHz
Radio Frequency Control Range	30 metres* (with optional System Interfaces/Processors)
Radio Frequency Carrier	433 MHz*
Operating Temperature	0°C to +50°C
Operating Humidity	5% to 95% Non-condensing
Touchscreen Display	- High-brightness color TFT LCD - 1/4VGA (320 x 240 pixels) with 65K colors - Integrated high-resolution touchscreen
Display Size (H x W)	89mm diagonal
Backlights	White LED (Display), Blue/Amber LED (Keypad)
Nominal Run Time on Full Charge	2.5 hours minimum, continuous use (5 to 7 days on average use)
Standby Time on Full Charge	30 Days
Battery Charge Time	3-4 Hours
Total System Memory	32MByte Flash (non-volatile) memory
Device Capability	Total number of devices is limited only by memory
Macro Capability	- Up to 64 steps in a single macro - Total number of macros is limited only by memory - Macro capability on every button
Communications	USB programming port
Dimensions (L x W x D)	7.6 in. (193mm) x 3.1 in. (79mm) x 1.1 in. (28mm)
Enclosure	High-impact molded ABS plastic
Weight	210g with battery pack
Warranty	One Year (Parts & Labour) – 90 days on battery

*All specifications subject to change without notice.
* Future upgradeable to 802.11x.*



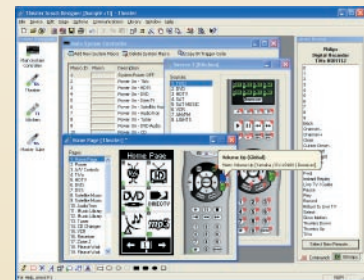
It's Under Control®

Accessories

- CV-4 Connecting Block
- RP-6 Remote Control Processor
- RM-433 RF Receiver
- CM-232 Communication Module
- VPS-1 Voltage Power Sensor
- SPS-1 Video Sync Power Sensor



- BzB-K4 Black Coloured Bezel
- BzA-K4 Almond Coloured Bezel



TheaterTouch Designer™ Programming Software