



Key Features

- Comfortable ergonomic design permits effortless, one-handed operation.
- Completely customisable, programmable and upgradeable.
- Eight source and four general purpose buttons with interchangeable keycaps.
- The perfect selection of hard buttons with separate transport and cursor controls.
- Transmits IR or RF (or both - on a single button or within a macro).
- Non-volatile Flash memory stores your programme even when power is lost.
- Extremely wide IR transmitting frequency range.
- System includes a Lithium-Ion battery and docking station.
- Field upgradeable firmware.
- USB Programming.

T1 Universal Controller

RTI's T1 Universal System Controller provides the perfect selection of buttons to operate today's sophisticated Home Theaters.

The T1 is the ideal solution to enable easy control of any media system, no matter how complex – at an affordable price. When used with RTI's available accessories the T1 becomes an intelligent and powerful control system.

Description

The T1 Universal System Controller is programmed using the same intuitive TheaterTouch Designer™ Software that RTI has become famous for. The T1 allows all other factory remote controls to be combined into one simple ergonomic user interface providing powerful one-handed command of any media system.

The T1 is more than just another remote control – it's an expandable control system. When used with our accessory devices the TheaterTouch™ system is capable of infrared and radio frequency transmission, power sensing for reliable operation, and RS-232 communications for advanced control.



Specifications

Power	3.6 VDC, 900 mA Lithium-Ion Battery Pack
Power Management	Automatic On/Off (tilt switch)
Infrared Control Range	9 metres @ 60 degrees
Infrared Frequency Transmission Range	15kHz - 460kHz
Radio Frequency Control Range	Up to 30 metres (with optional System Interfaces/Processors)
Radio Frequency Carrier	433 MHz
Operating Temperature	0°C to +50°C
Operating Humidity	5% to 95% Non-condensing
Nominal Run Time on Full Charge	20 hours minimum, continuous use (30 to 30 days on average use)
Standby Time on Full Charge	30 Days
Battery Charge Time	3-4 Hours
Total System Memory	256K Bytes (non-volatile) Flash memory
Device Capability	Total number of devices is limited only by memory
Macro Capability	- Up to 64 steps in a single macro - Total number of macros is limited only by memory. - Macro capability on every button
Communications	USB
Dimensions (L x W x D)	235mm x 64mm x 28mm
Enclosure	High-impact molded ABS with textured finish
Weight	200g with battery pack
Warranty	One Year (Parts & Labour) – 90 Days on the battery

All specifications subject to change without notice.



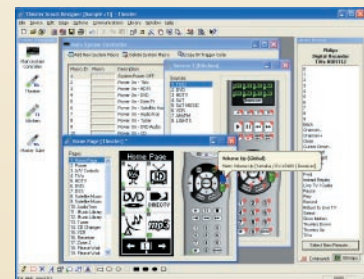
It's Under Control®

Accessories

CV-4	Connecting Block
RP-6	Remote Control Processor
RM-433	RF Receiver
CM-232	Communication Module
VPS-1	Voltage Power Sensor
SPS-1	Video Sync Power Sensor



BzB-K4	Black Coloured Bezel
BzA-K4	Almond Coloured Bezel



TheaterTouch Designer™ Programming Software