



## Key Features

- Stylish low-profile faceplate with snap-on attachment.
- Completely customisable, programmable and upgradeable.
- Full colour TFT LCD to display custom buttons, text, graphics, and animations.
- Integrated 10/100 Base-T Ethernet port.
- Extremely bright, backlit display and keys with adjustable brightness.
- Easy-to-use Windows based software for programming and customisation.
- Non-volatile Flash memory stores your programme even when power is lost.
- IR output port drives up to 300 metres of wire.
- 89 mm diagonal LCD screen.
- Field upgradeable firmware.
- USB Programming.

## RK3 Universal Controller

The RK3 is a compact colour LCD touch panel designed for flush-mount installations in walls or cabinets. It provides a self-contained control system for controlling audio/video components, lights, or other electronic systems in the home. It also displays digital video (motion JPEG) and web pages - either full screen or in an adjustable window.

The RK3 provides elegant and intuitive control of a home's entertainment, environment, security, and information systems. It is the only compact in-wall touchpanel that provides both direct infrared control and 10/100Base-T Ethernet for IP control. In addition, the RK3 is unique because its graphical user interface (GUI) and programming are completely customisable. In any situation from simple to complex, the RK3 provides the perfect level of control.

## Description

The RK3 is an advanced universal system controller that mounts in a wall. Its design maintains the perfect balance between display size and resolution. At 89 mm the LCD is small enough to blend into a room's interior, yet it provides the necessary resolution for displaying graphics such as digital photos, web pages, and CD cover artwork. The RK3 interface is fully programmable using RTI's TheaterTouch Designer™ software, making it easy to display custom buttons, text, graphics, and animations.

The RK3 can directly control almost any audio/video component or lighting system up to 300 m away using its infrared output port. In addition, the built-in Ethernet port allows the RK3 to display video from network security cameras, access the Internet, view and play songs stored on hard drive music servers, and control other devices on the network.

The RK3 can be used as a stand-alone device or as part of an expandable central control system. When used with the available RTI accessory devices, the RK3 is capable of infrared routing, relay control, power sensing, and RS-232 communications for advanced control.



# Specifications

|                                       |  |
|---------------------------------------|--|
| <b>Power</b>                          | 16 VDC, .5A max or Power-over-Ethernet   |
| <b>Power Management</b>               | Adjustable backlight brightness/power down time  |
| <b>Touchscreen Display</b>            | - High-brightness colour TFT LCD<br>- 1/4VGA (320 x 240 pixels) with 65K colours<br>- Integrated high-resolution touchscreen   |
| <b>Display Size (H x W)</b>           | 89mm diagonal  |
| <b>Backlights</b>                     | White LED (Display), Blue/Amber LED (Keypad)   |
| <b>Infrared Output Port</b>           | 200mA output<br>Drives up to 300 metres (1000 feet) of wire  |
| <b>Ethernet Port</b>                  | 10/100Base-T with Power-over-Ethernet  |
| <b>Operating Temperature</b>          | 0° C to 50° C  |
| <b>Operating Humidity</b>             | 5% to 95% Non-condensing   |
| <b>Total System Memory</b>            | 32MB Flash (non-volatile) memory   |
| <b>Device Capability</b>              | Total number of devices is limited only by memory  |
| <b>Macro Capability</b>               | - Up to 64 steps in a single macro<br>- Total number of macros is limited only by memory<br>- Macro capability on every button |
| <b>Communications</b>                 | USB programming port   |
| <b>Enclosure</b>                      | High-impact molded ABS plastic, black  |
| <b>Front Plate</b>                    | High-impact molded ABS plastic, white  |
| <b>Mounting</b>                       | Integrated mounting wings, or screws through front bezel   |
| <b>Front Plate Dimensions (H x W)</b> | 146mm x 140mm  |
| <b>Installation Cut-Out (H x W)</b>   | 130mm x 120mm  |
| <b>Total Depth in Wall</b>            | 35mm plus cables   |
| <b>Weight</b>                         | 285 grams  |
| <b>Warranty</b>                       | One Year (parts & Labour)  |

*All specifications subject to change without notice.*

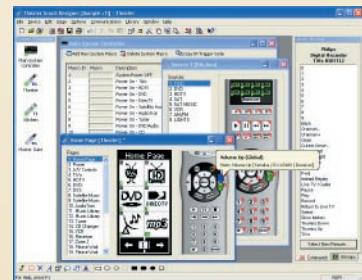


# Accessories

- CV-4 Connecting Block
- RP-6 Remote Control Processor
- RM-433 RF Receiver
- CM-232 Communication Module
- VPS-1 Voltage Power Sensor
- SPS-1 Video Sync Power Sensor



- BzB-K4 Black Coloured Bezel
- BzA-K4 Almond Coloured Bezel



**TheaterTouch Designer™ Programming Software**

